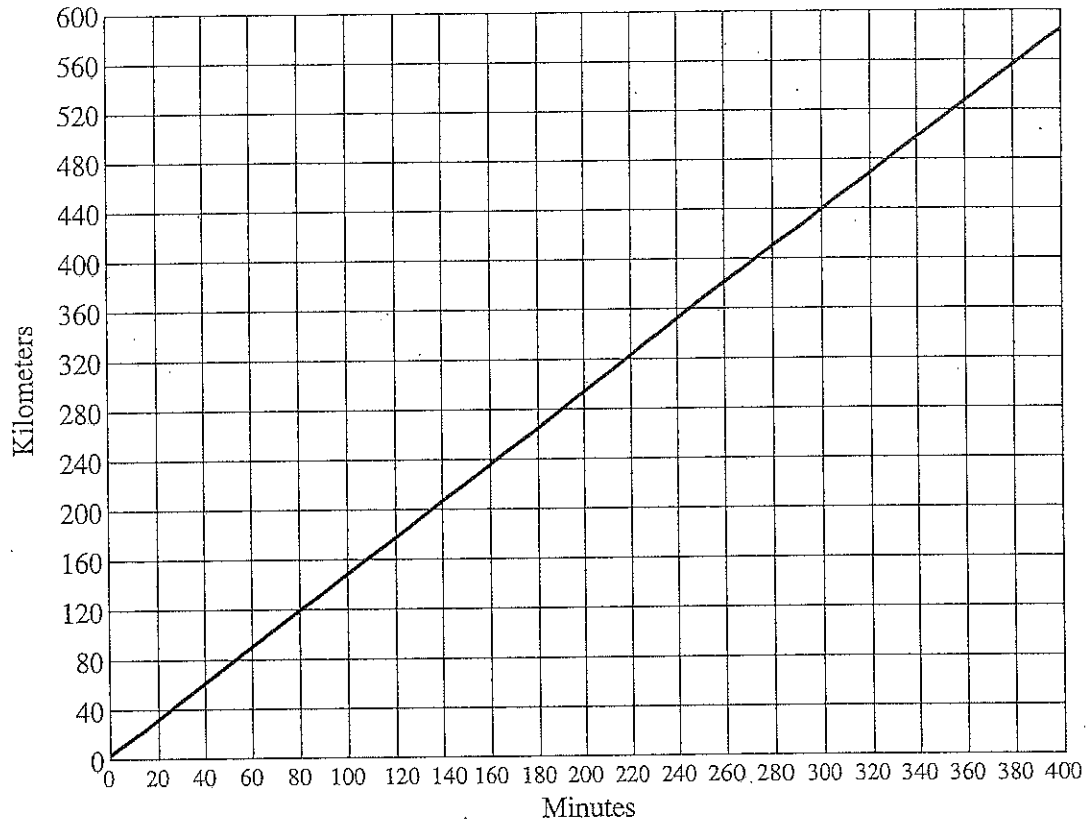


3.5 Distance Driving

A car is traveling along at a constant rate of speed, as depicted in the graph below. Use the information in the graph to explore the following questions.



1. About how far did the car travel in one hour?
2. About how far did the car travel in 6 hours?
3. About how fast is the car traveling?
4. About how long does it take the car to travel 220 kilometers?
5. About how long does it take the car to travel 560 kilometers?
6. About how long does it take the car to travel 'd' kilometers?